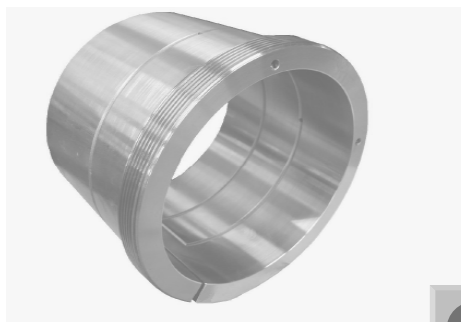
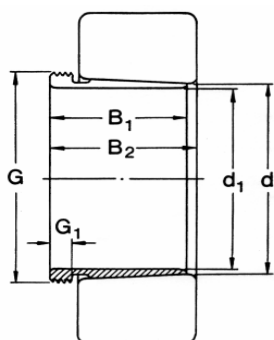
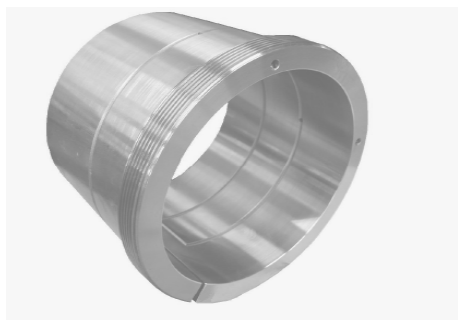
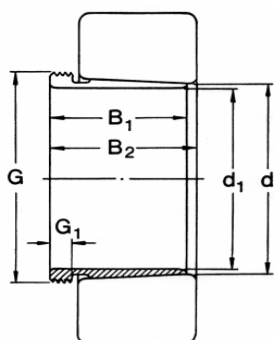


## WITHDRAWAL SLEEVES



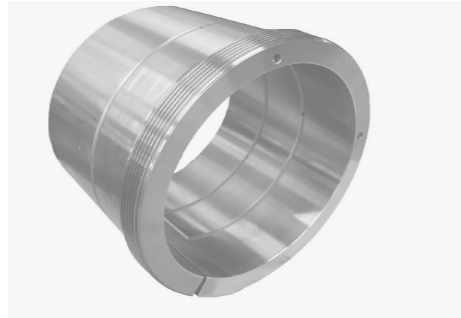
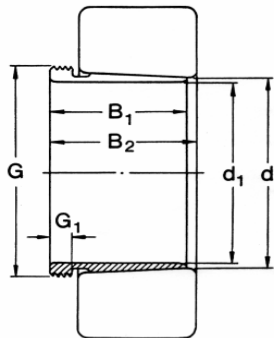
| Sleeve   | Principal dimensions |     |     |     |         |    | Weight | Dismount | Hydraulic |
|----------|----------------------|-----|-----|-----|---------|----|--------|----------|-----------|
| Type     | d1<br>mm             | d   | B1  | B2  | G       | G1 | Kg     | nut      | nut       |
| AH 2308  | 35                   | 40  | 40  | 43  | M45x1,5 | 7  | 0,130  | KM9      | HMV9E     |
| AH 308   | 35                   | 40  | 29  | 32  | M45x1,5 | 6  | 0,090  | KM9      | HMV9E     |
| AH 2309  | 40                   | 45  | 44  | 47  | M50x1,5 | 7  | 0,160  | KM10     | HMV10E    |
| AH 309   | 40                   | 45  | 31  | 34  | M50x1,5 | 6  | 0,110  | KM10     | HMV10E    |
| AH 2310  | 45                   | 50  | 50  | 53  | M60x2   | 8  | 0,240  | KM12     | HMV12E    |
| AH 310   | 45                   | 50  | 35  | 38  | M60x20  | 7  | 0,160  | KM12     | HMV12E    |
| AH 2311  | 50                   | 55  | 54  | 57  | M65x2   | 9  | 0,290  | KM13     | HMV13E    |
| AH 311   | 50                   | 55  | 37  | 40  | M65x2   | 7  | 0,190  | KM13     | HMV13E    |
| AH 2312  | 55                   | 60  | 57  | 60  | M70x2   | 10 | 0,340  | KM14     | HMV14E    |
| AH 312   | 55                   | 60  | 40  | 43  | M70x2   | 8  | 0,220  | KM14     | HMV14E    |
| AH 2313  | 60                   | 65  | 61  | 64  | M75x2   | 12 | 0,400  | KM15     | HMV15E    |
| AH 313   | 60                   | 65  | 42  | 45  | M75x2   | 8  | 0,250  | KM15     | HMV15E    |
| AH 2314  | 65                   | 70  | 65  | 69  | M85x2   | 10 | 0,530  | KM17     | HMV17E    |
| AH 314   | 65                   | 70  | 43  | 47  | M80x2   | 8  | 0,280  | KM16     | HMV16E    |
| AH 2315  | 70                   | 75  | 69  | 73  | M90x2   | 12 | 0,610  | KM18     | HMV18E    |
| AH 315   | 70                   | 75  | 45  | 49  | M85x2   | 8  | 0,310  | KM17     | HMV17E    |
| AH 2316  | 75                   | 80  | 72  | 76  | M95x2   | 12 | 0,670  | KM19     | HMV19E    |
| AH 316   | 75                   | 80  | 48  | 52  | M90x2   | 8  | 0,370  | KM18     | HMV18E    |
| AH 2317  | 80                   | 85  | 75  | 79  | M100x2  | 13 | 0,750  | KM20     | HMV20E    |
| AH 317   | 80                   | 85  | 52  | 56  | M100x2  | 9  | 0,480  | KM20     | HMV20E    |
| AH 2318  | 85                   | 90  | 80  | 84  | M105x2  | 14 | 0,850  | KM21     | HMV21E    |
| AH 318   | 85                   | 90  | 53  | 57  | M105x2  | 9  | 0,520  | KM21     | HMV21E    |
| AH 2319  | 90                   | 95  | 85  | 89  | M110x2  | 15 | 0,980  | KM22     | HMV22E    |
| AH 319   | 90                   | 95  | 57  | 61  | M110x2  | 10 | 0,590  | KM22     | HMV22E    |
| AH 2320  | 95                   | 100 | 90  | 94  | M120x2  | 15 | 1,230  | KM24     | HMV24E    |
| AH 320   | 95                   | 100 | 59  | 63  | M115x2  | 10 | 0,660  | KM23     | HMV23E    |
| AH 2322  | 100                  | 110 | 98  | 102 | M130x2  | 16 | 2,110  | KM26     | HMV26E    |
| AH 3122  | 100                  | 110 | 68  | 72  | M125x2  | 11 | 1,280  | KM25     | HMV25E    |
| AH 322   | 100                  | 110 | 63  | 67  | M130x2  | 12 | 1,260  | KM26     | HMV26E    |
| AH 24122 | 105                  | 110 | 82  | 91  | M115x2  | 13 | 0,710  | KM23     | HMV23E    |
| AH 2324  | 110                  | 120 | 105 | 109 | M140x2  | 17 | 2,470  | KM28     | HMV28E    |
| AH 3024  | 110                  | 120 | 60  | 64  | M130x2  | 13 | 1,150  | KM26     | HMV26E    |
| AH 3124  | 110                  | 120 | 75  | 79  | M140x2  | 12 | 1,670  | KM28     | HMV28E    |
| AH 24024 | 115                  | 120 | 73  | 82  | M125x2  | 13 | 0,700  | KM25     | HMV25E    |
| AH 24124 | 115                  | 120 | 93  | 102 | M130x2  | 13 | 1,000  | KM26     | HMV26E    |
| AH 2326  | 120                  | 130 | 115 | 119 | M150x2  | 19 | 3,020  | KM30     | HMV30E    |
| AH 3026  | 120                  | 130 | 67  | 71  | M140x2  | 14 | 1,410  | KM28     | HMV28E    |

## WITHDRAWAL SLEEVES



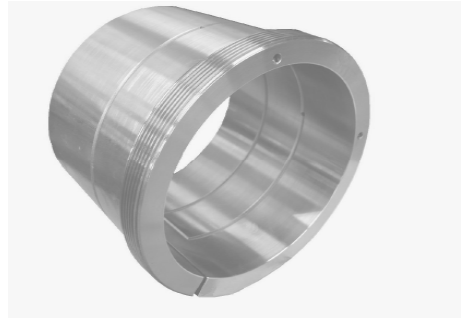
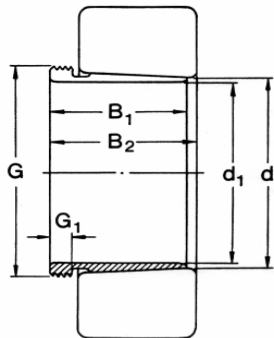
| Sleeve     | Principal dimensions |     |     |     |         |    | Weight | Dismount | Hydraulic |
|------------|----------------------|-----|-----|-----|---------|----|--------|----------|-----------|
| Type       | d1<br>mm             | d   | B1  | B2  | G       | G1 | Kg     | nut      | nut       |
| AH 3126    | 120                  | 130 | 78  | 82  | M150x2  | 12 | 1,870  | KM30     | HMV30E    |
| AH 24026   | 125                  | 130 | 83  | 93  | M135x2  | 14 | 0,880  | KM27     | HMV27E    |
| AH 24126   | 125                  | 130 | 94  | 104 | M140x2  | 14 | 1,150  | KM28     | HMV28E    |
| AH 2328    | 130                  | 140 | 125 | 130 | M160x3  | 20 | 3,600  | KM32     | HMV32E    |
| AH 3028    | 130                  | 140 | 68  | 73  | M150x2  | 14 | 1,550  | KM30     | HMV30E    |
| AH 3128    | 130                  | 140 | 83  | 88  | M160x3  | 14 | 2,210  | KM32     | HMV32E    |
| AH 24028   | 135                  | 140 | 83  | 93  | M145x2  | 14 | 0,950  | KM29     | HMV29E    |
| AH 24128   | 135                  | 140 | 99  | 109 | M150x2  | 14 | 1,300  | KM30     | HMV30E    |
| AH 2330    | 140                  | 150 | 135 | 140 | M170x3  | 24 | 4,220  | KM34     | HMV34E    |
| AH 3030    | 140                  | 150 | 72  | 5   | M160x3  | 15 | 1,760  | KM32     | HMV32E    |
| AH 3130    | 140                  | 150 | 96  | 101 | M170x3  | 15 | 2,700  | KM34     | HMV34E    |
| AH 24030   | 145                  | 150 | 90  | 101 | M155x3  | 15 | 1,050  | KM31     | HMV31E    |
| AH 24130   | 145                  | 150 | 115 | 126 | M160x3  | 15 | 1,550  | KM32     | HMV32E    |
| AH 2332    | 150                  | 160 | 140 | 146 | M180x3  | 24 | 4,720  | KM36     | HMV36E    |
| AH 24032   | 150                  | 160 | 95  | 106 | M170x3  | 15 | 2,300  | KM34     | HMV34E    |
| AH 24132   | 150                  | 160 | 124 | 135 | M170x3  | 15 | 3,000  | KM34     | HMV34E    |
| AH 3032    | 150                  | 160 | 77  | 82  | M170x3  | 16 | 2,060  | KM34     | HMV34E    |
| AH 3132    | 150                  | 160 | 103 | 108 | M180x3  | 16 | 3,210  | KM36     | HMV36E    |
| AH 3232    | 150                  | 160 | 124 | 130 | M180x3  | 20 | 4,080  | KM36     | HMV36E    |
| AH 2334    | 160                  | 170 | 146 | 152 | M190x3  | 24 | 5,250  | KM38     | HMV38E    |
| AH 24034   | 160                  | 170 | 106 | 117 | M180x3  | 16 | 2,700  | KM36     | HMV36E    |
| AH 24134   | 160                  | 170 | 125 | 136 | M180x3  | 16 | 3,250  | KM36     | HMV36E    |
| AH 3034    | 160                  | 170 | 85  | 90  | M180x3  | 17 | 2,430  | KM36     | HMV36E    |
| AH 3134    | 160                  | 170 | 104 | 109 | M190x3  | 16 | 3,400  | KM38     | HMV38E    |
| AH 3136    | 160                  | 180 | 116 | 122 | M200x3  | 19 | 4,220  | KM40     | HMV40E    |
| AH 3234    | 160                  | 170 | 134 | 140 | M190x3  | 24 | 4,800  | KM38     | HMV38E    |
| AH 2236    | 170                  | 180 | 105 | 110 | M200x3  | 17 | 3,730  | KM40     | HMV40E    |
| AH 2336    | 170                  | 180 | 154 | 160 | M200x3  | 26 | 5,830  | KM40     | HMV40E    |
| AH 2336 OH | 170                  | 180 | 154 | 160 | M200x3  | 26 | 6,050  | KM40     | HMV40E    |
| AH 24036   | 170                  | 180 | 116 | 127 | M190x3  | 16 | 3,200  | KM38     | HMV38E    |
| AH 24136   | 170                  | 180 | 134 | 145 | M190x3  | 16 | 3,750  | KM38     | HMV38E    |
| AH 3036    | 170                  | 180 | 92  | 98  | M190x3  | 17 | 2,810  | KM38     | HMV38E    |
| AH 3036    | 170                  | 180 | 92  | 98  | M190x3  | 17 | 2,800  | KM38     | HMV38E    |
| AH 3036 OH | 170                  | 180 | 92  | 98  | M190x3  | 17 | 2,800  | KM38     | HMV38E    |
| AH 3136 OH | 170                  | 180 | 116 | 122 | M200x3  | 19 | 3,900  | KM38     | HMV38E    |
| AH 3236    | 170                  | 180 | 140 | 146 | M200x3  | 24 | 5,320  | KM40     | HMV40E    |
| AH 3236 OH | 170                  | 180 | 140 | 146 | M200x3  | 24 | 4,850  | KM38     | HMV38E    |
| AH 2238    | 180                  | 190 | 112 | 117 | TR210x4 | 18 | 4,250  | HM42T    | HMV42E    |
| AH 2338    | 180                  | 190 | 160 | 167 | TR210x4 | 26 | 6,630  | HM42T    | HMV42E    |
| AH 2338 OH | 180                  | 190 | 160 | 167 | TR210x4 | 26 | 6,700  | HM42T    | HMV42E    |
| AH 24038   | 180                  | 190 | 118 | 131 | M200x3  | 18 | 3,550  | KM40     | HMV40E    |
| AH 24138   | 180                  | 190 | 146 | 159 | M200x3  | 18 | 4,450  | KM40     | HMV40E    |
| AH 3038    | 180                  | 190 | 96  | 102 | TR205x4 | 18 | 3,320  | HML41T   | HMV41E    |

## WITHDRAWAL SLEEVES



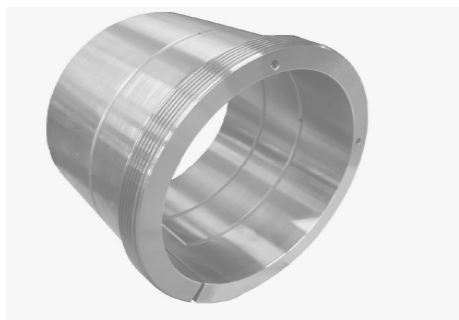
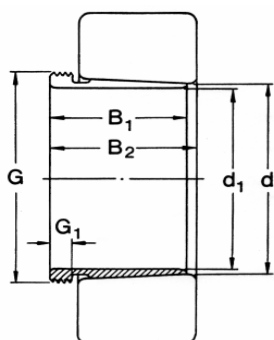
| Sleeve      | Principal dimensions |     |     |     |         |    | Weight | Dismount | Hydraulic |
|-------------|----------------------|-----|-----|-----|---------|----|--------|----------|-----------|
| Type        | d1<br>mm             | d   | B1  | B2  | G       | G1 | Kg     | nut      | nut       |
| AH 3038     | 180                  | 190 | 96  | 102 | M205X3  | 18 | 3,300  | KM40     | HMV40E    |
| AH 3038 OH  | 180                  | 190 | 96  | 102 | M205x3  | 18 | 3,300  | KM40     | HMV40E    |
| AH 3138     | 180                  | 190 | 125 | 131 | TR210x4 | 20 | 4,890  | HM42T    | HMV42E    |
| AH 3138 OH  | 180                  | 190 | 125 | 131 | TR210x4 | 20 | 4,500  | KM40     | HMV40E    |
| AH 3238     | 180                  | 190 | 145 | 152 | TR210x4 | 25 | 5,900  | KM42T    | HMV42E    |
| AH 3238 OH  | 180                  | 190 | 145 | 152 | TR210x4 | 25 | 5,900  | KM40     | HMV40E    |
| AH 2240     | 190                  | 200 | 118 | 123 | TR220x4 | 19 | 4,680  | HM44T    | HMV44E    |
| AH 2340     | 190                  | 200 | 170 | 177 | TR220x4 | 30 | 7,540  | HM44T    | HMV44E    |
| AH 2340 OH  | 190                  | 200 | 170 | 177 | TR220x4 | 30 | 7,600  | HM44T    | HMV44E    |
| AH 24040    | 190                  | 200 | 127 | 140 | TR210x4 | 18 | 4,000  | HM42T    | HMV42E    |
| AH 24140 OH | 190                  | 200 | 158 | 171 | TR210x4 | 18 | 5,050  | HM42T    | HMV42E    |
| AH 3040     | 190                  | 200 | 102 | 108 | TR215x4 | 19 | 3,800  | HML43T   | HMV43E    |
| AH 3040 OH  | 190                  | 200 | 102 | 108 | TR215x4 | 19 | 3,700  | HM42T    | HMV42E    |
| AH 3140     | 190                  | 200 | 134 | 140 | TR220x4 | 21 | 5,490  | HM44T    | HMV44E    |
| AH 3140 OH  | 190                  | 200 | 134 | 140 | TR220x4 | 21 | 5,650  | HM3044   | HMV44E    |
| AH 3240     | 190                  | 200 | 153 | 160 | TR220x4 | 25 | 6,680  | HM44T    | HMV44E    |
| AH 3240 OH  | 190                  | 200 | 153 | 160 | TR220x4 | 25 | 6,600  | HM3044   | HMV44E    |
| AH 2244     | 200                  | 220 | 130 | 136 | TR240x4 | 20 | 9,100  | HM48T    | HMV48E    |
| AH 2344     | 200                  | 220 | 181 | 189 | TR240x4 | 30 | 13,500 | HM48T    | HMV48E    |
| AH 2344 OH  | 200                  | 220 | 181 | 189 | TR240x4 | 30 | 13,500 | HM48T    | HMV48E    |
| AH 3044     | 200                  | 220 | 111 | 117 | TR235x4 | 20 | 7,400  | HML47T   | HMV47E    |
| AH 3044 OH  | 200                  | 220 | 111 | 117 | TR235x4 | 20 | 7,300  | HM46T    | HMV46E    |
| AH 3044 OH  | 200                  | 220 | 111 | 117 | TR235x4 | 20 | 7,300  | HM46T    | HMV46E    |
| AH 3144     | 200                  | 220 | 145 | 151 | TR240x4 | 23 | 10,400 | HM48T    | HMV48E    |
| AH 3144 OH  | 200                  | 220 | 145 | 151 | TR240x4 | 23 | 9,300  | HM3048   | HMV48E    |
| AH 2248     | 220                  | 240 | 144 | 150 | TR260x4 | 21 | 11,100 | HM52T    | HMV52E    |
| AH 2248 OH  | 220                  | 240 | 144 | 150 | TR260x4 | 21 | 11,500 | HM3052   | HMV52E    |
| AH 2348     | 220                  | 240 | 189 | 197 | TR260x4 | 30 | 15,500 | HM52T    | HMV52E    |
| AH 2348 OH  | 220                  | 240 | 189 | 197 | TR260x4 | 30 | 14,000 | HM52T    | HMV52E    |
| AH 3048     | 220                  | 240 | 116 | 123 | TR260x4 | 21 | 8,750  | HM52T    | HMV52E    |
| AH 3048 OH  | 220                  | 240 | 116 | 123 | TR260x4 | 21 | 7,950  | HM3052   | HMV52E    |
| AH 3048 OH  | 220                  | 240 | 116 | 123 | TR260x4 | 21 | 7,950  | HM3052   | HMV52E    |
| AH 3148     | 220                  | 240 | 154 | 161 | TR260x4 | 25 | 12,000 | HM52T    | HMV52E    |
| AH 3148 OH  | 220                  | 240 | 154 | 161 | TR260x4 | 25 | 12,000 | HM3052   | HMV52E    |
| AH 2252     | 240                  | 260 | 155 | 161 | TR290x4 | 23 | 14,000 | HM58T    | HMV58E    |
| AH 2252 OH  | 240                  | 260 | 155 | 161 | TR290x4 | 23 | 12,500 | HM58T    | HMV58E    |
| AH 2352     | 240                  | 260 | 205 | 213 | TR290x4 | 30 | 19,600 | HM58T    | HMV58E    |
| AH 2352 OH  | 240                  | 260 | 205 | 219 | TR290x4 | 30 | 17,500 | HM58T    | HMV58E    |
| AH 3052     | 240                  | 260 | 128 | 135 | TR280x4 | 23 | 10,700 | HM56T    | HMV56E    |
| AH 3052 OH  | 240                  | 260 | 128 | 135 | TR280x4 | 23 | 9,600  | HM3056   | HMV56E    |
| AH 3052 H   | 240                  | 260 | 128 | 135 | TR280x4 | 23 | 9,600  | HM3056   | HMV56E    |
| AH 3052 OH  | 240                  | 260 | 128 | 135 | TR280x4 | 23 | 9,600  | HM3056   | HMV56E    |

## WITHDRAWAL SLEEVES



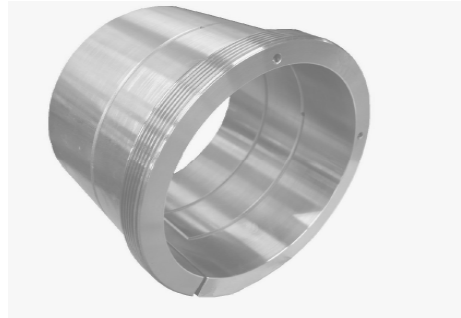
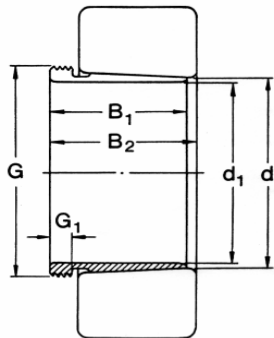
| Sleeve      | Principal dimensions |     |     |     |         |    | Weight | Dismount | Hydraulic |
|-------------|----------------------|-----|-----|-----|---------|----|--------|----------|-----------|
| Type        | d1<br>mm             | d   | B1  | B2  | G       | G1 | Kg     | nut      | nut       |
| AH 3152     | 240                  | 260 | 172 | 179 | TR290x4 | 26 | 16,200 | HM58T    | HMV58E    |
| AH 3152 OH  | 240                  | 260 | 172 | 179 | TR290x4 | 26 | 15,500 | HM3056   | HMV56E    |
| AH 2256     | 260                  | 280 | 155 | 163 | TR310x5 | 24 | 15,200 | HM62T    | HMV62E    |
| AH 2256 OH  | 260                  | 280 | 155 | 163 | TR300x4 | 24 | 15,000 | HM3160   | HMV60E    |
| AH 2356     | 260                  | 280 | 212 | 220 | TR310x5 | 30 | 17,100 | HM3160   | HMV60E    |
| AH 2356 OH  | 260                  | 280 | 212 | 220 | TR310x5 | 30 | 19,500 | HM62T    | HMV62E    |
| AH 24156 OH | 260                  | 280 | 202 | 219 | TR300x4 | 22 | 16,3   | HM 60 T  | HMV 60    |
| AH 3056     | 260                  | 280 | 131 | 139 | TR300x4 | 24 | 12,000 | HM3060   | HMV60E    |
| AH 3056 OH  | 260                  | 280 | 131 | 139 | TR300x4 | 24 | 11,000 | HM3060   | HMV60E    |
| AH 3156     | 260                  | 280 | 175 | 183 | TR310x5 | 28 | 17,500 | HM62T    | HMV62E    |
| AH 3156 OH  | 260                  | 280 | 175 | 183 | TR310x5 | 28 | 17,000 | HM3160   | HMV60E    |
| AH 2260     | 280                  | 300 | 170 | 178 | TR330X5 | 26 | 18,100 | HM66T    | HMV66E    |
| AH 2260 OH  | 280                  | 300 | 170 | 178 | TR330X5 | 26 | 18,000 | HM3164   | HMV64E    |
| AH 3060     | 280                  | 300 | 145 | 153 | TR320x5 | 26 | 14,400 | HM3064   | HMV64E    |
| AH 3060     | 280                  | 300 | 145 | 153 | TR320X5 | 26 | 13,000 | HM3064   | HMV64E    |
| AH 3060 OH  | 280                  | 300 | 145 | 153 | TR320X5 | 26 | 13,000 | HM3064   | HMV64E    |
| AH 3160     | 280                  | 300 | 192 | 200 | TR330X5 | 30 | 20,800 | HM66T    | HMV66E    |
| AH 3160 OH  | 280                  | 300 | 192 | 200 | TR330X5 | 30 | 20,500 | HM3164   | HMV64E    |
| AH 3260     | 280                  | 300 | 228 | 236 | TR330X5 | 34 | 26,000 | HM66T    | HMV66E    |
| AH 3260 OH  | 280                  | 300 | 228 | 236 | TR330X5 | 34 | 23,500 | HM3164   | HMV64E    |
| AH 2264     | 300                  | 320 | 180 | 190 | TR350X5 | 27 | 20,200 | HM70T    | HMV70E    |
| AH 2264 OH  | 300                  | 320 | 180 | 190 | TR350X5 | 27 | 20,000 | HM3168   | HMV68E    |
| AH 3064     | 300                  | 320 | 149 | 157 | TR345x5 | 27 | 16,000 | HML69T   | HMV69E    |
| AH 3064     | 300                  | 320 | 149 | 157 | TR345X5 | 27 | 17,000 | HM3068   | HMV68E    |
| AH 3064 OH  | 300                  | 320 | 149 | 157 | TR345X5 | 27 | 17,000 | HM3068   | HMV68E    |
| AH 3164     | 300                  | 320 | 209 | 217 | TR350X5 | 31 | 24,500 | HM70T    | HMV70E    |
| AH 3164 OH  | 300                  | 320 | 209 | 217 | TR350X5 | 31 | 24,500 | HM3168   | HMV68E    |
| AH 3264     | 300                  | 320 | 246 | 254 | TR350X5 | 36 | 30,600 | HM70T    | HMV70E    |
| AH 3264 OH  | 300                  | 320 | 246 | 254 | TR350X5 | 36 | 27,500 | HM3168   | HMV68E    |
| AH 3068     | 320                  | 340 | 162 | 171 | TR365x5 | 28 | 19,500 | HML73T   | HMV73E    |
| AH 3068     | 320                  | 340 | 162 | 171 | TR365X5 | 28 | 19,000 | HM3072   | HMV72E    |
| AH 3068 OH  | 320                  | 340 | 162 | 171 | TR365X5 | 28 | 19,000 | HM3072   | HMV72E    |
| AH 3168     | 320                  | 340 | 225 | 234 | TR370X5 | 33 | 29,000 | HM74T    | HMV74E    |
| AH 3168 OH  | 320                  | 340 | 225 | 234 | TR370X5 | 33 | 28,500 | HM3172   | HMV72E    |
| AH 3268     | 320                  | 340 | 264 | 273 | TR370X5 | 38 | 35,400 | HM74T    | HMV74E    |
| AH 3268 OH  | 320                  | 340 | 264 | 273 | TR370X5 | 38 | 32,000 | HM3172   | HMV72E    |
| AH 24168 OH | 320                  | 340 | 269 | 288 | TR360x5 | 26 | 27,100 | HM72T    | HMV72     |
| AH 3072     | 340                  | 360 | 167 | 176 | TR385x5 | 30 | 21,000 | HML77T   | HMV77E    |
| AH 3072     | 340                  | 360 | 167 | 176 | TR385X5 | 30 | 21,000 | HM3076   | HMV76E    |
| AH 3072 OH  | 340                  | 360 | 167 | 176 | TR385X5 | 30 | 21,000 | HM3076   | HMV76E    |
| AH 3172     | 340                  | 360 | 229 | 238 | TR400X5 | 33 | 30,500 | HM3180   | HMV80E    |
| AH 3172 OH  | 340                  | 360 | 229 | 238 | TR400X5 | 35 | 30,500 | HM3176   | HMV76E    |
| AH 3272     | 340                  | 360 | 274 | 283 | TR400X5 | 40 | 41,500 | HM3180   | HMV80E    |

## WITHDRAWAL SLEEVES



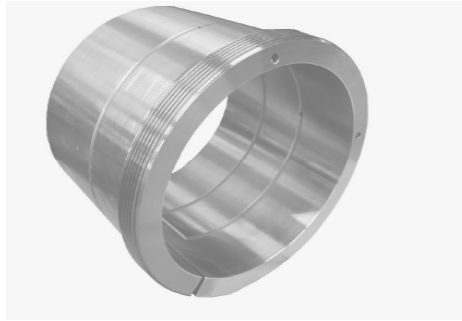
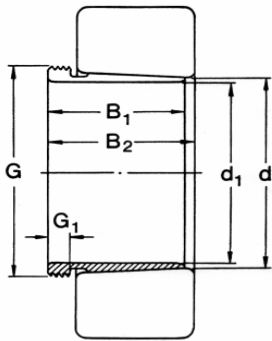
| Sleeve       | Principal dimensions |     |     |     |         |    | Weight | Dismount | Hydraulic |
|--------------|----------------------|-----|-----|-----|---------|----|--------|----------|-----------|
| Type         | d1<br>mm             | d   | B1  | B2  | G       | G1 | Kg     | nut      | nut       |
| AH 3272 OH   | 340                  | 360 | 274 | 283 | TR380X5 | 40 | 35,500 | HM3176   | HMV76E    |
| AH 3076      | 360                  | 380 | 170 | 180 | TR410x5 | 31 | 23,200 | HML82T   | HMV82E    |
| AH 3076      | 360                  | 380 | 170 | 180 | TR410X5 | 31 | 22,500 | HM3080   | HMV80E    |
| AH 3076 OH   | 360                  | 380 | 170 | 180 | TR410X5 | 31 | 22,500 | HM3080   | HMV80E    |
| AH 3176      | 360                  | 380 | 232 | 242 | TR420X5 | 36 | 35,700 | HM3184   | HMV84E    |
| AH 3176 OH   | 360                  | 380 | 232 | 242 | TR420X5 | 36 | 33,000 | HM3180   | HMV80E    |
| AH 3276      | 360                  | 380 | 284 | 294 | TR420X5 | 42 | 45,600 | HM3184   | HMV84E    |
| AH 3276 OH   | 360                  | 380 | 284 | 294 | TR420X5 | 42 | 42,000 | HM3180   | HMV80E    |
| AH 3080      | 380                  | 400 | 183 | 193 | TR430x5 | 33 | 27,300 | HML86T   | HMV86E    |
| AH 3080      | 380                  | 400 | 183 | 193 | TR430X5 | 33 | 26,000 | HM3080   | HMV84E    |
| AH 3080 OH   | 380                  | 400 | 183 | 193 | TR430X5 | 33 | 26,000 | HM3080   | HMV84E    |
| AH 3180      | 380                  | 400 | 240 | 250 | TR440X5 | 38 | 39,500 | HM3188   | HMV88E    |
| AH 3180 OH   | 380                  | 400 | 240 | 250 | TR440X5 | 38 | 36,000 | HM3184   | HMV84E    |
| AH 3280      | 380                  | 400 | 302 | 312 | TR440X5 | 44 | 51,700 | HM3188   | HMV88E    |
| AH 3280 OH   | 380                  | 400 | 302 | 312 | TR440X5 | 44 | 48,000 | HM3184   | HMV84E    |
| AH 3084      | 400                  | 420 | 186 | 196 | TR450x5 | 34 | 29,000 | HML90T   | HMV90E    |
| AH 3084      | 400                  | 420 | 186 | 196 | TR450X5 | 34 | 28,000 | HM3088   | HMV88E    |
| AH 3084 OH   | 400                  | 420 | 186 | 196 | TR450X5 | 34 | 28,000 | HM3088   | HMV88E    |
| AH 3184      | 400                  | 420 | 266 | 276 | TR460X5 | 40 | 27,900 | HM3088   | HMV88E    |
| AH 3184 OH   | 400                  | 420 | 266 | 276 | TR460X5 | 40 | 43,000 | HM3188   | HMV88E    |
| AH 3284      | 400                  | 420 | 321 | 331 | TR460X5 | 46 | 46,500 | HM3192   | HMV92E    |
| AH 3284 OH   | 400                  | 420 | 321 | 331 | TR440X5 | 46 | 54,500 | HM3188   | HMV88E    |
| AH 3088      | 420                  | 440 | 194 | 205 | TR470X5 | 35 | 31,000 | HM3092   | HMV92E    |
| AH 3088 OH   | 420                  | 440 | 194 | 205 | TR470X5 | 35 | 31,000 | HM3092   | HMV92E    |
| AH 3188      | 420                  | 440 | 270 | 281 | TR480X5 | 42 | 49,800 | HM3196   | HMV96E    |
| AH 3188 OH   | 420                  | 440 | 270 | 281 | TR480X5 | 42 | 46,000 | HM3192   | HMV92E    |
| AH 3288      | 420                  | 440 | 330 | 341 | TR460X5 | 48 | 64,500 | HM3192   | HMV92E    |
| AH 3288 OH   | 420                  | 440 | 330 | 341 | TR460X5 | 48 | 64,500 | HM3192   | HMV92E    |
| AH 3092      | 440                  | 460 | 202 | 213 | TR490X5 | 37 | 34,000 | HM3096   | HMV96E    |
| AH 3092 OH   | 440                  | 460 | 202 | 213 | TR490X5 | 37 | 34,000 | HM3096   | HMV96E    |
| AH 3192      | 440                  | 460 | 285 | 296 | TR510X6 | 43 | 51,500 | HM3196   | HMV96E    |
| AH 3192 OH   | 440                  | 460 | 285 | 296 | TR510X6 | 43 | 51,500 | HM3196   | HMV96E    |
| AH 3292      | 440                  | 460 | 349 | 360 | TR480X5 | 50 | 80,000 | HM3196   | HMV96E    |
| AH 3292 OH   | 440                  | 460 | 349 | 360 | TR480X5 | 50 | 80,000 | HM3196   | HMV96E    |
| AH 3096      | 460                  | 480 | 205 | 217 | TR520X6 | 38 | 34,000 | HM30/500 | HMV100E   |
| AH 3096 OH   | 460                  | 480 | 205 | 217 | TR520X6 | 38 | 34,000 | HM30/500 | HMV100E   |
| AH 3196      | 460                  | 480 | 295 | 307 | TR530X6 | 45 | 63,000 | HM31/500 | HMV100E   |
| AH 3196 OH   | 460                  | 480 | 295 | 307 | TR530X6 | 45 | 63,000 | HM31/500 | HMV100E   |
| AH 3296      | 460                  | 480 | 364 | 376 | TR500X5 | 52 | 81,000 | HM31/500 | HMV100E   |
| AH 3296 OH   | 460                  | 480 | 364 | 376 | TR500X5 | 52 | 81,000 | HM31/500 | HMV100E   |
| AH 30/500    | 480                  | 500 | 209 | 221 | TR530X6 | 40 | 41,000 | HM30/530 | HMV106E   |
| AH 30/500 OH | 480                  | 500 | 209 | 221 | TR530X6 | 40 | 41,000 | HM30/530 | HMV106E   |
| AH 31/500    | 480                  | 500 | 313 | 325 | TR530X6 | 47 | 66,500 | HM31/530 | HMV106E   |

## WITHDRAWAL SLEEVES



| Sleeve       | Principal dimensions |     |     |     |          |    | Weight  | Dismount  | Hydraulic |
|--------------|----------------------|-----|-----|-----|----------|----|---------|-----------|-----------|
| Type         | d1<br>mm             | d   | B1  | B2  | G        | G1 | Kg      | nut       | nut       |
| AH 31/500 OH | 480                  | 500 | 313 | 325 | TR530X6  | 47 | 66,500  | HM31/530  | HMV106E   |
| AH 30/530    | 500                  | 530 | 230 | 242 | TR560X6  | 45 | 61,900  | HM30/560  | HMV112E   |
| AH 30/530 OH | 500                  | 530 | 230 | 242 | TR560X6  | 45 | 63,500  | HM30/560  | HMV112E   |
| AH 31/530    | 500                  | 530 | 325 | 337 | TR560x6  | 53 | 93,400  | HM31/560  |           |
| AH 32/530    | 500                  | 530 | 412 | 424 | TR580x6  | 57 | 133,000 | HM116T    | HMV16E    |
| AH 30/560    | 530                  | 560 | 240 | 252 | TR600X6  | 45 | 73,500  | HM30/600  | HMV120E   |
| AH 30/560 OH | 530                  | 560 | 240 | 252 | TR600X6  | 45 | 73,500  | HM30/600  | HMV120E   |
| AH 31/560    | 530                  | 560 | 335 | 347 | TR600x6  | 55 | 108,000 | HM31/600  |           |
| AH 30/600    | 560                  | 600 | 245 | 259 | TR630X6  | 45 | 77,000  | HM30/630  | HMV126E   |
| AH 30/600 OH | 560                  | 600 | 245 | 259 | TR630X6  | 45 | 77,000  | HM30/630  | HMV126E   |
| AH 30/630    | 600                  | 630 | 258 | 272 | TR670X6  | 46 | 89,700  | HM30/670  | HMV134E   |
| AH 30/630 OH | 600                  | 630 | 258 | 272 | TR670X6  | 46 | 88,500  | HM30/670  | HMV134E   |
| AH 31/630    | 600                  | 630 | 375 | 389 | TR670x6  | 60 | 140,000 | HM31/670  |           |
| AH 32/630    | 600                  | 630 | 475 | 489 | TR680x6  | 63 | 191,000 | HM136T    | HMV36E    |
| AH 30/670    | 630                  | 670 | 280 | 294 | TR710X7  | 50 | 127,000 | HM30/710  | HMV142E   |
| AH 30/670 OH | 630                  | 370 | 280 | 294 | TR710X7  | 50 | 125,000 | HM30/710  | HMV142E   |
| AH 32/670    | 630                  | 670 | 500 | 514 | TR720x7  | 62 | 256,000 | HM144T    | HMV44E    |
| AH 30/710    | 670                  | 710 | 286 | 302 | TR750X7  | 50 | 138,000 | HM30/750  | HMV150E   |
| AH 30/710 OH | 670                  | 710 | 286 | 302 | TR750X7  | 50 | 138,000 | HM30/750  | HMV150E   |
| AH 32/710    | 670                  | 710 | 500 | 516 | TR760x7  | 65 | 282,000 | HM31/750  |           |
| AH 30/750    | 710                  | 750 | 300 | 316 | TR800x7  | 50 | 159,000 | HM30/800  |           |
| AH 31/750    | 710                  | 750 | 425 | 441 | TR800x7  | 60 | 238,000 | HM31/800  |           |
| AH 32/750    | 710                  | 750 | 540 | 556 | TR800x7  | 65 | 320,000 | HM31/800  |           |
| AH 30/800    | 750                  | 800 | 308 | 326 | TR850x7  | 50 | 204,000 | HM30/850  |           |
| AH 31/800    | 750                  | 800 | 438 | 456 | TR850x7  | 63 | 305,000 | HM31/850  |           |
| AH 32/800    | 750                  | 800 | 550 | 568 | TR850x7  | 67 | 401,000 | HM31/850  |           |
| AH 30/850    | 800                  | 850 | 325 | 343 | TR900x7  | 53 | 230,000 | HM30/900  |           |
| AH 31/850    | 800                  | 850 | 462 | 480 | TR900x7  | 62 | 345,000 | HM31/900  |           |
| AH 32/850    | 800                  | 850 | 585 | 603 | TR900x7  | 70 | 461,000 | HM31/900  |           |
| AH 30/900    | 850                  | 900 | 335 | 355 | TR950x8  | 55 | 253,000 | HM30/950  |           |
| AH 31/900    | 850                  | 900 | 475 | 495 | TR950x8  | 63 | 379,000 | HM31/950  |           |
| AH 32/900    | 850                  | 900 | 585 | 605 | TR950x8  | 70 | 489,000 | HM31/950  |           |
| AH 30/950    | 900                  | 950 | 355 | 375 | TR1000x8 | 55 | 285,000 | HM30/1000 |           |
| AH 31/950    | 900                  | 950 | 500 | 520 | TR1000x8 | 62 | 426,000 | HM31/1000 |           |
| AH 32/950    | 900                  | 950 | 600 | 620 | TR1000x8 | 70 | 533,000 | HM31/1000 |           |

## WITHDRAWAL SLEEVES



| <u>Sleeve</u> | <u>Principal dimensions</u> |   |    |    |   |    | <u>Weight</u> | <u>Dismount</u> | <u>Hydraulic</u> |
|---------------|-----------------------------|---|----|----|---|----|---------------|-----------------|------------------|
| Type          | d1<br>mm                    | d | B1 | B2 | G | G1 | Kg            | nut             | nut              |